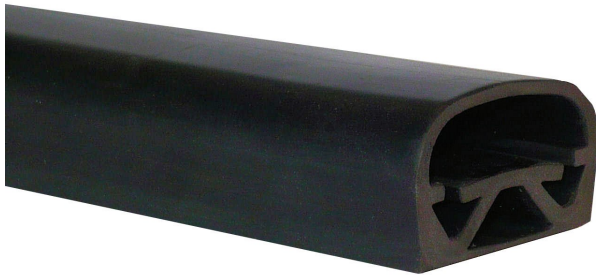


## TS19 Sensing Edges

## Information Sheet



### Features

- Custom configurations
- Variety of mounting options
- Immediate activation
- Ease of installation
- Fail-safe wiring available
- Durable construction
- End caps available

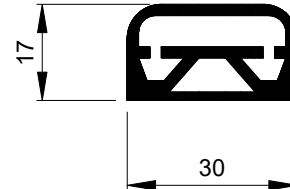
The TS19 is a very versatile sensing edge. It is ideal for control and automation functions as well as safety applications. The TS19 does not use mounting channel but instead can be fixed using adhesives or double-sided adhesive tape. This makes the edge easy to use in applications where the sensing edge has to be fitted around a curve.

The inner ribbon-switch is situated in the upper section of the housing, ensuring quick activation and good overtravel for such a low profile. End caps are also available.

### Typical Applications:

- Pallet stackers
- Advanced guided vehicles (AGV's)
- Rise-Fall theatre stages
- Travelling storage systems
- Powered furniture

### Dimensions



### Technical Specification

Actuating force (80mmø test piece)	<55N (15,5kg)
Overtravel movement to 250N	4mm
Actuating distance (80mmø test piece)	approx. 3,5mm
Housing material	EPDM
Housing colour	Black
Channel material	Aluminium or Plastic
Ingress protection	IP65
Operating temperature	-20°C to + 50°C
Typical weight	400g/m
Recommended max voltage	30V d.c.
Switching current @ 30Vdc	1A
Means of mounting	Adhesive or Double sided Tape